

CL-CK Contactor Wizard Documentation

The objective of this document is to give a step-by-step guide to allow customers help configuring the contactors and the accessories and place order on GE over the internet

1. Click on the Solution Advisor link. It will launch the wizard.



2. Select the Application type (AC3 or AC1) and the input units for the contactor selection (kW or Amps) The selections will be displayed on the right side panel. Once the selection is over press the "Continue" button



3. A) AC3 / kW Selection On the features tab select the following from the dropdowns
 - Poles
 - Pole Configuration
 - Motor Voltage
 - Motor Rating
 - Control Frequency
 - Coil Voltage

In case your motor rating is in HP, use the "Calculate" button to convert HP into kW and select the next kW rating.

kW Calculator

Enter your Motor Rating in HP

kW Calculation Result

We have determined your kW to be **7.46**

Goto step 4

3. B) AC3 Amps Selection - On the features tab select the following from the dropdowns.

GE Power Controls

GE Home | GE Ind. Systems | GE PC Home | GE PC in the UK | GE PC Contacts You | Contact Us | Site Map

Restart | View Bill of Materials

CLICK Contactors Selector

Optimized for a minimum of 800x600 screen resolution.

Catalog Number: CL00A310TD

FEATURES | Auxiliary Contacts | Accessories

Please select the following features:

Poles: 3 Poles | Pole Configuration: 3P-N0

Motor Amps: 9 Amps | Control Frequency: AC 50Hz

Coil Voltage: AC 24V, 50Hz

* For longer life
For Motors: ~440V, 3-phase, 50/60 Hz

Features:

- Current 9 Amps
- 3 Poles, 3P-N0
- Coil AC 24V, 50Hz

Accessories:



(Click/Enlarge to enlarge)

[Outline Drawing](#)

Dimensions (mm): 81H x 45W x 85D
(Does not include front-side mount auxiliary contacts)

Features and Benefits

- Easier to install
- Allow more flexible configurations
- Make better use of Panel Space

General Information about the [CLICK Contactors](#)

- Poles
- Pole Configuration
- Motor Amps
- Control Frequency
- Coil Voltage

Goto step 4

3. C) AC1 Amps Selection - On the features tab select the following from the dropdowns

The screenshot shows the GE Power Controls website interface for the CL/CK Contactors Selector. The 'FEATURES' tab is active, and the following options are selected in the dropdowns:

- Poles: 3 Poles
- Pole Configuration: 3P NO
- Current Rating: 25 Amps
- Control Frequency: AC 50Hz
- Coil Voltage: AC 24V, 50Hz

Additional information on the page includes:

- Catalog Number: CL00A310TD
- Features:
 - Current 25 Amps
 - 3 Poles, 3P NO
 - Coil AC 24V, 50Hz
- Dimensions (mm): 81H x 45W x 85D (Does not include front-side mount auxiliary contacts)
- Buttons: Add to Bill of Material, View Bill of Material
- Features and Benefits:
 - Easier to install
 - Allow more flexible configurations
 - Make better use of Panel Space
- General Information about the [CL/CK Contactors](#)

- Poles
- Pole Configuration
- Current Rating
- Control Frequency
- Coil Voltage

4. Click on "Auxiliary Contact" or "Next" Tab and select auxiliaries and the quantity

The screenshot shows the GE Power Controls website interface for the CL/CK Contactors Selector, with the 'AUXILIARY CONTACTS' tab active. The following options are selected:

- Front-Aux. Contact Block: 1 NO, Quantity: 1
- Side-Aux. Contact Block: None, Quantity: None
- Mechanical Latch Block: None, Quantity: ?
- Mechanical Interlock: Mechanical Interlock
- Mech. Interlock Mounting: Side

Additional information on the page includes:

- Catalog Number: CL00A310TD
- Features:
 - Voltage 415V / 440V
 - 3 Poles, 4 kW
 - Coil AC 24V, 50Hz
- Accessories:
 - Front Aux 1 NO -1 Hz. BELF10
 - Side Mech. Interlock BELA
- Buttons: Add to Bill of Material, View Bill of Material
- Features and Benefits:
 - Easier to install
 - Allow more flexible configurations

- In case of help about the auxiliaries click on the help icon

CLICK Contactors

Front-Mount Auxiliary Contact Blocks:

- Front-mount auxiliary contact blocks clip onto front face of the contactor.
- Terminal numbering in accordance with EN 50035 and EN 50012.
- Terminals protected against accidental contact in accordance with VDE 0106 T 100, VDE 04 IP30.

Side-Mount Auxiliary Contact Blocks:

- Side-mount auxiliary contact blocks can be mounted on either left or right sides of the contactor. Positive displacement contacts are designed to prevent simultaneous closing of NO and NC contacts to avoid overlapping between opposing functions.
- Terminal numbering in accordance with EN 50035 and EN 50012.
- Terminals protected against accidental contact in accordance with VDE 0106 T 100, VDE 04 IP30.

Mechanical Latch Block:

- Mechanical Latch Block is used to convert a standard contactor into a latched contactor. Easy to mount, it slips onto front face of contactor.
- Terminal numbering in accordance with EN 50035.
- Disconnection of contactor or auxiliary contactor, either using an electrical pulse or manually.
- Terminals protected against accidental contact in accordance with VDE 0106 T 100, VDE 04 IP30.
- Frontal selector allows for adapter in function of the housing of the contactor.

Mechanical and Mechanical/Electrical Interlock:

- Mechanical interlocks used for interlocking of two contactors, prevent the closing of one contactor (as long as the other remains closed).



- Click on "Accessories" or "Next" Tab and select the accessories


GE Power Controls

[GE Home](#)
[GE Ind. Systems](#)
[GE PC Home](#)
[GE PC in the UK](#)
[GE PC Contacts You](#)
[Contact Us](#)
[Site Map](#)

[Restart](#)
[View Bill of Materials](#)

CLICK Contactors Selector

ACCESSORIES

Please select the following accessories:

Electronic Timer: <input type="text" value="On delay 0.1-2s"/>	Pneumatic Timer: <input type="text" value="None"/>
Surge Suppressor: <input type="text" value="RC"/>	Terminal Protector: <input type="text" value="None"/>
Interface Module: <input type="text" value="None"/>	

[?](#)

[Back](#)

Catalog Number: CL00A310TD



Features:

- Voltage: 415V / 440V
- 3 Poles, 4kW
- Coil AC 24V, 50Hz

Accessories:

- Front Aux-1 NO --1 Nos. BCLF10
- Side Mech. Interlock BELA
- Timer-On delay 0.1-2s BETL02C
- Surge Supp-RC type BSLR20

(Click image to enlarge)

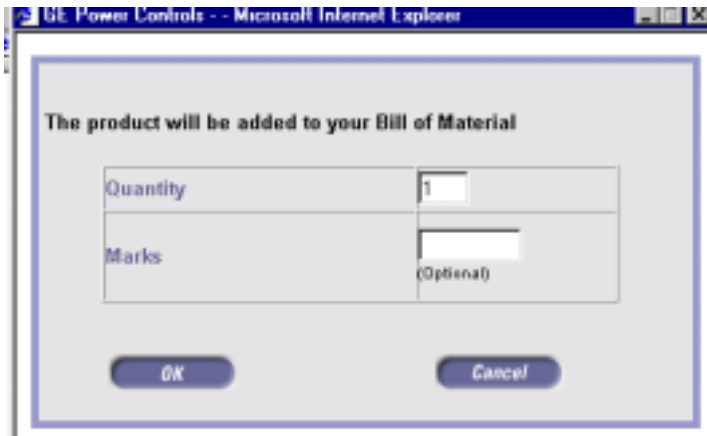
[Outline Drawing](#)

Dimensions (mm): 81H x 49W x 85D
(Does not include front- or side-mount auxiliary contacts)


[Add to Bill of Material](#)
[View Bill of Material](#)

[Features and Benefits](#)

- After configuring the product, click on "Add to Bill of Material" button on the right



- Click on "View Bill of Material". This will open a form where the details can be filled in and the order can be printed or submitted to GE

 **GE Power Controls**

Please complete the required information:

*First/Last Name	<input type="text"/>	How should GE contact you?	<input type="text"/>
Company	<input type="text"/>	Phone Number	<input type="text"/>
*Street Address	<input type="text"/>	Fax Number	<input type="text"/>
*City/State/Zip	<input type="text"/>	*E-mail Address	<input type="text"/>
Country	<input type="text"/>	Project Name/P.O.#	<input type="text"/>
Comments	<input type="text"/>		

DEL	EDIT	ITEM	MARKS	QTY	DESCRIPTION	PRODUCT/ CATALOG #	LIST PRICE	EXT PRICE
		1	<input type="text"/>	<input type="text" value="1"/>	1 Contactor (415V / 440V 4 kW 3 Poles) 1 Front Aux-1 NO 1 Side Mech. Interlock 1 Side Aux-Base Block 2NO	CL00A310TD BCLF10 BELA BCLL20		

Submit for Quote. Our Sales Team w

- To print the order, click the "Print Order" button. The printable format will open in a new window



GE Power Controls

Name:	Rajesh Pandey	Contact me via:	e-Mail
Company:	GE Power Controls	Phone Number:	+91 80 5725139 Ext 323
Street Address:	1106/9, Garuve Bhatti Palya, AM Industrial Estate, Hosur Road	Fax Number:	+91 80 5721882
City/State/Zip:	Bangalore, IN 560068	E-mail:	rajesh.pandey@geind.ge.com
Country:	India	Project Name:	TDC/POV100

Quote printed: Tue Jan 23 18:37:56 UTC+0530 2001

Qty	Description	Catalog #	List Price	Total List Price
1	1 Contactor (415V / 440V 4 kW 3 Poles)	CL00A310TD		
	1 Front Aux-1 NO	BCLF10		
	1 Side Mech. Interlock	BELA		
	1 Timer-On delay 0.1-2s	BETL02C		

Total List Price:

- To Submit the order to GE, click on the "Submit" button in Step 8

A GE sales representative will contact you



- Click on the "Submit" button to send the order to GE or "Cancel" button to cancel the transaction

