



GE Digital Energy

Intelligent Energy Management™ (IEM™)

GE Digital Energy offers the award-winning Intelligent Energy Management™ (IEM™) capability to optimize energy cost while maintaining the highest possible reliability for both single and parallel redundant Uninterruptible Power Supply (UPS) units.

For parallel UPS installations, secured with Redundant Parallel Architecture™ (RPA™), IEM saves energy by dynamically utilizing the UPS modules as needed to meet the required load without compromising on the power quality to the critical load. Use of IEM resulted in incremental energy savings of up to \$33,000 annually for a system of four 100kVA units secured by RPA operating at full load for 50 hours per week and partial load (10%) for the remaining time.

When the quality of the nominal mains power meets the requirements of the critical load, IEM raises the single UPS efficiency up to 97%.

Benefits of IEM include:

- Reduced energy consumption
- Maintains power quality and reliability to the critical load
- Mains power quality monitoring
- User-definable protection levels
- Scheduled activation
- Additional units switch on automatically in critical situations to increase reliability
- Equal operating hours for each UPS in a parallel system

Connectivity Solutions

Increased system availability and process protection

In today's business environment, a power failure can cause loss of crucial data, expensive down time, and damaged computers or industrial equipment. With the use of appropriate monitoring and management software, the UPS becomes a comprehensive power quality solution. The software is an indispensable and fully integrated element which increases system availability and process protection. During a power failure, the software takes a number of actions: users are alerted, processes are managed into defined status, open files and communication links are closed, and unattended systems are shut down in a controlled way. When the mains power returns, the system is automatically started up and begins operating.

Protection Software

The main function of the GE protection software is data and operating system protection. PowerJUMP DataShield™ and PowerFLAG™ diminish the risk of losing data or system crashes. The software provides events handling and computer shutdown for all major operating systems to enhance security of precious data. Multivendor and multi-platform environments as well as client-server structures are managed, using SNMP-based network communication protocols.

GE PROTECTION SOFTWARE PRODUCTS

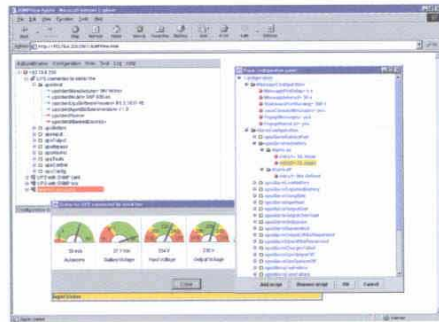
- PowerJUMP DataShield™
- PowerFLAG™

Management Software

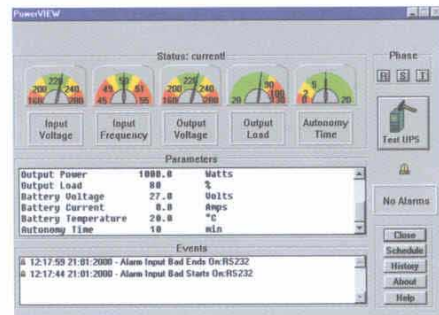
The GE UPS management software provides direct access to remote UPS and active management of each UPS in multi-unit configurations to ensure efficient and predictable power quality. A network manager or facilities engineer can use PowerJUMP Manager™ to monitor and control the local or remote UPS, and the equipment and processes it protects. Typically, a SNMP client/agent structure, direct serial link or modem connection is used for this purpose. The PowerJUMPin™ software allows easy integration into all leading Network Management Systems. The UPS can also be monitored on the Internet using the GE IRIS system.

GE MANAGEMENT SOFTWARE PRODUCTS

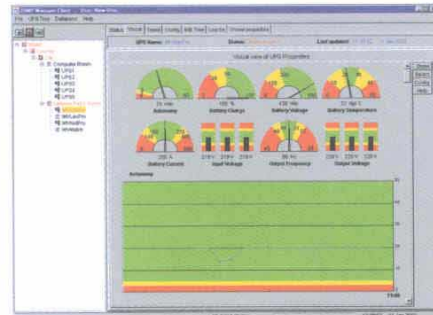
- PowerJUMP Manager™
- PowerJUMPin™
- IRIS – Internet Remote Information System
- UPS Service tools



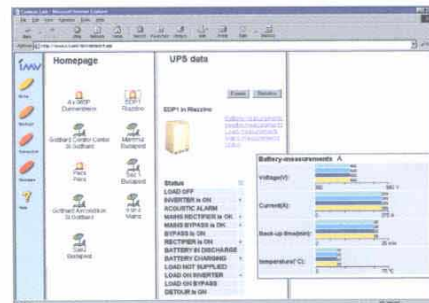
PowerJUMP DataShield™



PowerFLAG™



PowerJUMP Manager™



IRIS



GE Digital Energy

Via Cantonale 50
6595 Riazzino (Locarno)
Switzerland
+41 (0) 91.850.51.51

2018 Powers Ferry Road SE
Suite 500
Atlanta, GA 30339 USA
866.GEDE.UPS (866.433.3877)