

DV-300 DC Drive



The DV-300 is a three phase, six-pulse converter which is available in either non-regenerative or fully regenerative design. The DV-300 Drive Controller allows for precise regulation of motor speed, current and field (field weakening and field economy are standard). This performance and chassis packaging allows the DV-300 to be applied easily in a wide array of industries including textiles, paper converting, plastics converting, corrugating, wire drawing, rubber and plastics, metal processing, machine tools, material handling and more.

To allow for easy startup, the DV-300 offers two choices, an optional keypad programmer or the standard GE Toolbox. The Windows™ -based GE Toolbox enables the user to set parameters and program converter I/O and self tune the regulators. Archiving the drive set-up allows the user to have pre-configured set-ups available for similar applications, which saves the users valuable time and is easily maintained.

The DV-300 drive can handle difficult applications and complex operations with the addition of the Digital General Function (DGF) card. The DGF card is an optional Intel Microprocessor-based board which allows application specific regulators, provides special sequencing operations and solves other drive control challenges.

A wide range of advanced communication capabilities are available for the DV-300 drive. The drive communicates on a high speed serial link including the following protocol options: Interbus-S™, Profibus-DP™, DeviceNet™ and Genius®. These communication options allow the drive, system control and the data collection system to be easily integrated. Other options for the DV-300 include additional I/O, removable keypad programmer and keypad door mount kit.

INDEX TO SECTION 9

Product Description	9-1
Model Numbering System Diagram	9-2
Pricing, Dimensions & Weights	9-3
Options & Accessories	9-4
Standard Specifications	9-5
Replacement Parts	9-7
Dimensional Drawings	9-10

DV-300 Model Numbering System

Description

6K	DV3	NNN(N)	QN	X	NN	XN
-----------	------------	---------------	-----------	----------	-----------	-----------

GE Product Code _____

DV-300 Drive Type _____

Rated current _____

- 017 = 17 A
- 035 = 35 A
- 2000 = 2000A

Number of quadrants _____

- 2 = 2 quadrants (non-regenerative)
- 4 = 4 quadrants (regenerative)

Voltage rating _____

- B = 500/MAX AC V for Q2
- C = 690/MAX AC V for Q2
- F = 500/MAX AC V for Q4
- G = 690/MAX AC V for Q4

Rated field current _____

- 10 = 10 A
- 14 = 14 A
- 20 = 20 A
- 25 = 25 A
- 40 = 40 A
- 70 = 70 A

Product release _____

- X = Major revision level
- N = Minor revision level

9

Pricing, Dimensions & Weights

Model No.	Cat. No.	HP		Output DC (Nominal Current)	Width inches	Height inches	Depth inches	Weight lbs.	List Price (GO-5DV)
		230 V	460 V						
DV-300 Regenerative/Reversing									
6KDV3017Q4F10**	D6140	5	10	17	10.4	14.2	10.8	18.5	4,000.
6KDV3035Q4F10**	D6141	10	20	35	10.4	14.2	10.8	18.5	4,200.
6KDV3056Q4F10**	D6142	15	30	56	10.4	14.2	10.8	19.4	4,500.
6KDV3088Q4F14**	D6143	25	50	88	10.4	14.2	10.8	27.6	4,900.
6KDV3112Q4F14**	D6144	30	60	112	10.4	14.2	10.8	27.6	5,100.
6KDV3148Q4F14**	D6145	40	75	148	10.4	14.2	10.8	27.6	5,600.
6KDV3224Q4F20**	D6146	60	125	224	12.2	15.3	13.3	54	7,500.
6KDV3280Q4F20**	D6147	75	150	280	12.2	15.3	13.3	65	8,200.
6KDV3336Q4F20**	D6148	100	200	336	12.2	15.3	13.3	65	10,400.
6KDV3400Q4F20**	D6149	125	250	400	12.2	15.3	13.3	65	10,900.
6KDV3450Q4F20**	D6150	135	275	450	12.2	15.3	14.5	70.5	11,900.
6KDV3560Q4F25**	D6151	150	300	560	20.5	20.1	15.8	134	17,900.
6KDV3850Q4F25**	D6152	250	500	850	20.5	20.1	15.8	143.3	20,900.
6KDV31300Q4F40**	*	300	800	1300	See Dimension Pages				24,433.
6KDV31350Q4F40**	*	350	800	1350	See Dimension Pages				25,577.
6KDV31500Q4F40**	*	400	900	1500	See Dimension Pages				27,025.
6KDV31800Q4F40**	*	500	1000	1800	See Dimension Pages				31,411.
6KDV32000Q4F40**	*	600	1250	2000	See Dimension Pages				38,780.
DV-300 Non-Regenerative/Non-Reversing									
6KDV3017Q2B10**	D6114	5	10	17	10.4	14.2	10.8	18.1	3,700.
6KDV3035Q2B10**	D6115	10	20	35	10.4	14.2	10.8	18.1	3,900.
6KDV3056Q2B10**	D6116	15	30	56	10.4	14.2	10.8	19	4,000.
6KDV3088Q2B14**	D6117	25	50	88	10.4	14.2	10.8	25.6	4,150.
6KDV3112Q2B14**	D6118	30	60	112	10.4	14.2	10.8	25.6	4,400.
6KDV3148Q2B14**	D6119	40	75	148	10.4	14.2	10.8	25.6	4,800.
6KDV3224Q2B20**	D6120	60	125	224	12.2	15.3	13.3	51	6,400.
6KDV3280Q2B20**	D6121	75	150	280	12.2	15.3	13.3	61.7	6,600.
6KDV3336Q2B20**	D6122	100	200	336	12.2	15.3	13.3	61.7	7,100.
6KDV3400Q2B20**	D6123	125	250	400	12.2	15.3	13.3	61.7	7,800.
6KDV3450Q2B20**	D6124	135	275	450	12.2	15.3	14.5	61.7	9,000.
6KDV3560Q2B25**	D6125	150	300	560	20.5	20.1	15.8	123.5	13,900.
6KDV3800Q2B25**	D6126	250	500	800	20.5	20.1	15.8	143.3	15,400.
6KDV31000Q2B40**	*	300	600	1000	See Dimension Pages				16,761.
6KDV31300Q2B40**	*	400	800	1300	See Dimension Pages				19,012.
6KDV31400Q2B40**	*	400	800	1400	See Dimension Pages				19,606.
6KDV31500Q2B40**	*	400	900	1500	See Dimension Pages				21,154.
6KDV31800Q2B70**	*	500	1000	1800	See Dimension Pages				23,357.
6KDV32000Q2B70**	*	600	1250	2000	See Dimension Pages				26,148.
6KDV32200Q2B70**	*	600	1250	2200	See Dimension Pages				29,829.
6KDV32350Q2B70**	*	700	1250	2350	See Dimension Pages				38,269.

* Non-Stock - Includes Drive Controller and External Bridge. Please contact factory for more information

** Please contact Customer Service for latest revision.

DV-300 Options & Accessories

Description	Model No.	Cat. No.	List Price (GO-5DV)
Digital General Function Card	6KCV300DGF	A3405	1,230.
DeviceNet Option Board (DGF Card Req'd)	6KCV300DCN	A3404	240.
DeviceNet Option Board (without DGF)	6KCV300DVN	A3410	745.
Profibus-DP Bus Communication Option Card	6KCV300PDP	A3409	745.
Interbus-S Bus Communication Option Card	6KCV300INS	A3408	805.
RS 485/232 Converter	6KCV300CTI	A3429	170.
Digital Encoder to Sinusoidal Converter DV-300 (Dinrail mount)	6KDV300DES	A3402	220.
I/O Expansion Option Board (Discrete & Analog)	6KCV300TBO	A3401	230.
AV/DV-300 Keypad Programmer	6KCV300KPU	A3406	290.
External Keypad Mounting Kit	6KCV300KPM	A3407	75.
Win+Drive	6KCV300WPD	A3420	5,000.
Genius Communication Option Board	HE300GEN200	A3418	1,450.

Digital General Function Card

Card allows user to implement high performance software for specific applications such as winders, position control, PID functions, etc.

DeviceNet Option Board

Requires the use of the DGF card. Allows communication between a master DGF card and up to 63 slave DGF cards. Provides drive control and diagnostics.

SBI DeviceNet Option Board

Allows communication between a master and up to 63 slaves. Provides drive control and diagnostics. (DGF card not required).

Profibus-DP Bus Communication Option Card

Allows connection to the Profibus fieldbus network. Provides drive control and diagnostic capability.

Interbus-S Bus Communication Option Card

Allows connection to the Interbus fieldbus network. Provides drive control and diagnostic capability.

RS 485/232 Converter

Converter module that allows connection between the RS 232 serial output of a computer and the RS 485 input of the AV-300 or DV-300. This unit allows for single or multi-drop connection.

Digital Encoder to Sinusoidal Converter

Allows the adaptation, galvanic separation, and connection of a digital encoder to the input XE1 on the drives. XE1 is supplied as a connection for a sinusoidal encoder.

I/O Expansion Option Board

Allows the addition of four digital inputs, four digital outputs, and two analog outputs. It is possible to connect two of these per drive.

Keypad Programmer

Allows the configuration of the drive without the need for a PC. Enable, disable, start/stop, monitor, and configure the drive using the two line LCD display.

External Keypad Mounting Kit

Allows for the remote mounting of the keypad. Includes a two meter cable, template, and mounting plate for door mounting.

Win+Drive

A Windows based graphic programming tool used to develop custom regulator schemes, special sequencing operations, and many other drive control applications. Used in conjunction with the Digital General Function Card.

Genius Communication Option Board

Allows connection to GE Fanuc's Genius fieldbus network. Provides complete drive control and diagnostic capability.

Standard Specifications

Programmable:

Four accel/decel ramps Ramp types: linear, s-curve	Each independently adjustable from 0 to 65,000 seconds S-curve shape is adjustable through special time constant parameters.	
Min. / Maxi. speed limits	With independent adjustments for forward and reverse speeds.	
Adjustable current limits (motoring and braking)	150% for 60 seconds standard.	
Seven preset speeds	Selectable through three contact closures.	
Password protection	5-digit combination, selectable by the user.	
Field control	- Current regulation - Field weakening voltage regulation	- Disable, for external field supply - Field economy
Jog functions	Reference from internal parameter or external reference potentiometer. Can be programmed with or without linear time.	
Zero speed functionality	Includes zero speed level, zero speed threshold and delay detection.	
Tach feedback bypass	Drive automatically switches to armature voltage feedback if the tach signal is lost.	
Catch a spinning motor (Auto Capture)	Allows restart of drive with a rotating motor.	
Reset to default parameters	Aids in start-up and troubleshooting.	

Protective Functions:

Faults detected:	- Field loss - Overvoltage/ Undervoltage - Motor overtemperature - Motor overload - Tach loss - Option card failure	- Heatsink overtemperature - Overcurrent - Customer's external faults - Communication card failure - Enable sequence error - Fault data history (last ten faults)
------------------	--	--

Standard I/O:

Analog inputs:	3 Differential, 12 BIT Programmable selectable for +/- 10 VDC, 0-20mA, 0-10 VDC, 4-20mA
Digital inputs:	4 Fixed 24 VDC (Enable, Start/Stop, Fast Stop, External Fault)
Digital outputs:	1 drive OK normally open contact 1 Programmable normally open contact
Built in RS485 communications port	Allows communication with drive for setup and troubleshooting
Sinusoidal encoder input (w/internal 5 VDC available from drive)	Provides the best speed regulation.
Digital tach (w/ internal 24 VDC available from drive)	Utilizes standard digital tachometer for speed regulation.
DC tach input	Utilizes analog DC tachometers for speed regulation.

Standard Specifications (continued)**Environmental Operating Conditions:**

Ambient temperature:	0-40° C
Ambient humidity:	5% to 85% Relative humidity (non-condensing)
Altitude:	to 3300 ft. (1000m) without derating
Enclosure:	IP20 - open chassis

AC Input:

Armature:	230 to 500 VAC \pm 10%, 3 phase
Control power:	115 to 230 VAC \pm 10%, single phase
Field:	230 to 460 VAC \pm 10%, single phase

Performance:

Regenerative and non-regenerative		
150% overload for 60 seconds		
Speed, current and CEMF regulation		
16 BIT Microprocessor		
Speed regulation:	Digital encoder	=0.02%
	Sinusoidal encoder	=0.01%
	DC tach	=up to 0.1%
	CEMF	=1 - 2%

Electrical Standards and Codes:

CE
C - UL
IEC: Low voltage directive #EN50178

Options:

2-line backlit, detachable & removable keypad programmer
Remote keypad mounting kit
Communications - Interbus-S, Profibus-DP, Devicenet and Genius
DGF 386 (digital general function card)
TBO digital or analog expansion modules (maximum of two): Per TBO board: four 24 VDC digital inputs, four 24 VDC digital outputs, two +10 VDC analog outputs

DV-300 Replacement Parts**Spare Parts DV-300 Non-regenerative - 240/500 VDC Type 6KDV3***Q2B..B1 *** = Amp Rating**

Catalog No.	Description (PC Card Name)	Rec. Parts	Size (Amp Rating)													
			017 17A	032 32A	056 56A	088 88A	112 112A	148 148A	224 224A	280 280A	336 336A	400 400A	450 450A	560 560A	800 800A	
6KS550N	Main control card (R-TPD3G)	X	1	1	1	1	1	1	1	1	1	1	1	1	1	
6KS5N24	Field Power card (PFC1A-32)	X	1	1	1	1	1	1								
6KS5N25	Field Power card (PFC2A-31)	X								1	1	1	1	1		
6KS5N03	Power supply card (SW1-31)	X	1	1	1	1	1	1								
6KS5N10	Power supply card (SW2-32)	X								1	1	1	1	1		
6KS5N97	Power supply card (SW3-32)	X													1	1
6KS595H	Power connection card (PBB-2B)		1	1	1											
6KS5N40	Power card (FIR151-2B)	X	1	1												
6KS5N41	Power card (FIR152-2B)	X			1	1	1	1								
6KS5N42	Power card (FIR251-2B)	X								1	1	1	1	1		
6KS5N23	Power card (FIR3-32-2B)	X													1	1
6KS5N14	Snubber card (SN5-31)									1	1	1	1	1	1	1
6KS5N51	Keypad (INT-KB)		1	1	1	1	1	1	1	1	1	1	1	1	1	1
6KS5N20	Field Snubber card (SN-FC)														1	1
6KS5N15	Filter card (FL-31)														1	1
6KS5N22	Connection card (CN3)														1	1
6KS8N04	Fuse holder		2	2	2	2	2	2								
6KS8N29	Fuse holder									2	2	2	2	2	2	2
6KS824B	Field fuses 15A - 500V	X	2	2	2	2	2	2								
6KS823B	Field fuses 25A - 600V	X								2	2	2	2	2	2	2
6KS7H22	TA transformer	X													2	2
6KS7F72	SCR Power module 18A	X	3													
6KS7F73	SCR Power module 25A	X		3												
6KS7F74	SCR Power module 40A	X			3	3										
6KS7F75	SCR Power module 55A	X					3									
6KS7F77	SCR Power module 90A	X						3								
6KS7F78	SCR Power module 130A	X								3						
6KS7F79	SCR Power module 160A	X									3					
6KS7F41	SCR Power module 210A	X										3				
6KS7F84	SCR Power module 250A	X											3			
6KS737F	SCR Power module 320A	X												3		
6KS773F	SCR Power module 320A	X													3	
6KS771F	SCR Power module 500A	X														3
6KS7F73	Field Power module 25A	X								1	1	1	1	1	1	1
6KS79F3	Field Power module 15A	X	1	1												
6KS79F1	Field Power module 28A	X			1	1	1	1								
6KS799F	Field Power module 40A	X								1	1	1	1	1	1	1
6KF4G60	Internal fuses -G2MUF2/ 800A/660V	X													3	
6KF4G61	Internal fuses -G2MUF2/ 1000A/660V	X														3
6KS7G76	FAN A 024 DC-00-0-62/72				1											
6KS7G71	FAN A 024-00-0 170B					1	1	1	2	2	2	2				
6KS7G78	FAN A 024DC 345-B												2			
6KS7G17	FAN A 230VAC -50HZ														3	3
6KS7G33	Thermal switch 85°C ±3				1	1				2	2	2	2			
6KS7G31	Thermal switch 70°C ±3						1									
6KS7G29	Thermal switch 80°C ±3							1						2		
6KS7G30	Thermal switch 90°C ±3														3	3
6KS8B28	Internal fuse - 1A/ 250V	X	1	1	1	1	1	1								
6KS8B29	Internal fuse - 2.5A/ 250V	X								1	1		1	1	1	1
6KS8B19	Internal fuse - 4A/ 500V	X								3	3	3	3	3	3	3
6KS7I69	Internal fuse - 3.15A/ 250V	X								1	1	1	1	1	1	1
6KS820B	Internal fuse - 16A/ 500V	X								3	3	3	3	3		
6KS821B	Internal fuse - 25A/ 500V	X													3	3

DV-300 Replacement Parts (continued)**Spare Parts DV-300 Non-regenerative - 690 VDC Type 6KDV3***Q2C..C1 *** = Amp Rating**

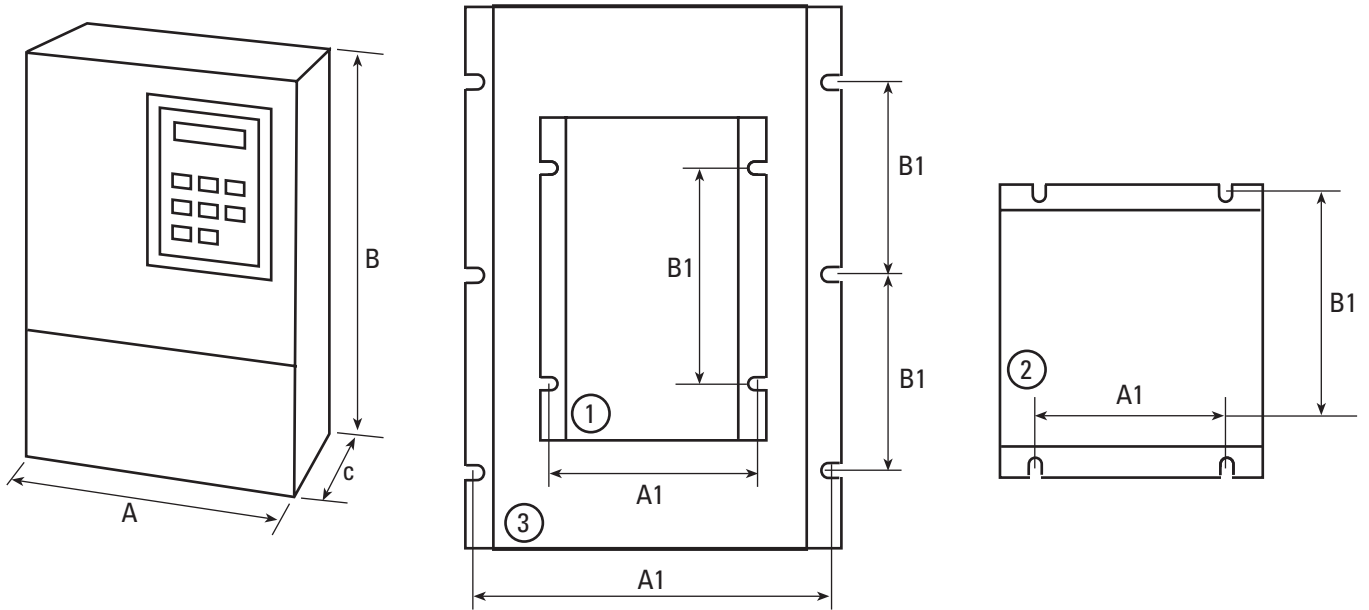
Catalog No.	Description (PC Card Name)	Size (Amp Rating)						
		900	1150	1350	1500	1800	2000	2350
6KS550N	Main control card (R-TPD3G)	1	1	1	1	1	1	1
6KS5N70	Field Power card (PFC-40)	1	1	1	1			
6KS5N73	Field Power card (PFC-70)					1	1	1
6KS5N03	Power supply card (SW1-31)	1	1	1	1	1	1	1
6KS5N71	Power card (FIR5-61-2B)	1	1	1	1	1	1	1
6KS5C79	Driver card (PTY1-1)	6	6	6	6	6	6	6
6KS5N51	Keypad (INT-KB)	1	1	1	1	1	1	1
6KS5N72	Filter capacitor card (FS-56)	1	1	1	1	1	1	1
6KS7H22	TA transformer	2	2	2				
6KS7H23	TA transformer				2	2	2	
6KS7H30	TA transformer							2
6KS7G76	Fan A 024 DC-00-0-62/72		1	1	1	2	2	2
6KS7G30	Thermal switch 90°C ± 3		1	1	1	1	1	1
6KS7G53	Field fuses FWP50	2	2	2	2			
6KS7G54	Field fuses FWP80					2	2	2
6KS7F74	SCR Power module 40A	1	1	1	1			
6KS779F	Field Power module 99A	1	1	1	1			
6KS7F75	SCR Power module 55A					1	1	1
6KS785F	Field Power module 120A					1	1	1
6KS7772	SCR Power module 700A	6						
6KS7781	SCR Power module 1000A		6	6				
6KS7782	SCR Power module 1100A				6			
6KS7785	SCR Power module 1600A					6		
6KS7786	SCR Power module 1700A						6	
6KS7789	SCR Power module 2400A							6
6KS7791	Internal fuses 700A/660V	6						
6KS7798	Internal fuses 900A/660V		6					
6KS7801	Internal fuses 1100A/660V			6				
6KS7802	Internal fuses 1250A/660V				6			12
6KS7796	Internal fuses 700A/660V					12		
6KS7797	Internal fuses 800A/660V						12	

Spare Parts DV-300 Regenerative - 240/500 VDC Type 6KDV3*Q4F..B1 *** = Amp Rating**

Catalog No.	Description (PC Card Name)	Rec. Part	Size (Amp Rating)													
			017 17A	032 32A	056 56A	088 88A	112 112A	148 148A	224 224A	280 280A	336 336A	400 400A	450 450A	560 560A	800 800A	
6KS550N	Main control card (R-TPD3G)	X	1	1	1	1	1	1	1	1	1	1	1	1	1	1
6KS5N24	Field Power card (PFC1A-32)	X	1	1	1	1	1	1								
6KS5N25	Field Power card (PFC2A-31)	X								1	1	1	1	1		
6KS5N03	Power supply card (SW1-31)	X	1	1	1	1	1	1								
6KS5N10	Power supply card (SW2-32)	X								1	1	1	1	1		
6KS5N97	Power supply card (SW3-32)	X													1	1
6KS5H95	Power connection card (PBB)		1	1	1											
6KS5N12	Power card (FIR151)	X	1	1												
6KS5N17	Power card (FIR152)	X			1	1	1	1								
6KS5N18	Power card (FIR251)	X								1	1	1	1	1		
6KS5N21	Power card (FIR3-32)	X													1	1
6KS5N14	Snubber card (SN5-31)									1	1	1	1	1	1	1
6KS5N51	Keypad (INT-KB)		1	1	1	1	1	1	1	1	1	1	1	1	1	1
6KS5N20	Field Snubber card (SN-FC)														1	1
6KS5N15	Filter card (FL-31)														1	1
6KS5N22	Connection card (CN3)														1	1
6KS7H22	TA transformer	X													2	2
6KS8N04	Fuse holder		2	2	2	2	2	2								
6KS8N29	Fuse holder									2	2	2	2	2	2	2
6KS824B	Field fuses 15A-500V	X	2	2	2	2	2	2								
6KS823B	Field fuses 25A-600V	X								2	2	2	2	2	2	2
6KS7F72	SCR Power module 18A	X	6													
6KS7F73	SCR Power module 25A	X		6												
6KS7F74	SCR Power module 40A	X			6	6										
6KS7F75	SCR Power module 55A	X					6									
6KS7F77	SCR Power module 90A	X						6								
6KS7F78	SCR Power module 130A	X							6							
6KS7F79	SCR Power module 160A	X								6						
6KS7F41	SCR Power module 210A	X									6					
6KS7F84	SCR Power module 250A	X										6				
6KS737F	SCR Power module 320A	X											6			
6KS773F	SCR Power module 320A	X												6		
6KS771F	SCR Power module 500A	X													6	
6KS7F73	Field Power module 25A	X								1	1	1	1	1	1	1
6KS79F3	Field Power module 15A	X	1	1												
6KS79F1	Field Power module 28A	X			1	1	1	1								
6KS799F	Field Power module 40A	X								1	1	1	1	1	1	1
6KF4G59	Internal fuses (G2MUF1/) 630A/660V	X													3	
6KF4G60	Internal fuses (G2MUF02/) 800A/660V	X														3
6KS7G76	Fan A 024 DC-00-0-62/72				1											
6KS7G71	Fan A 024-00-0 170B					1	1	1	2	2	2	2				
6KS7G78	Fan A 024DC 345-B													2		
6KS7G17	Fan A 230VAC -50HZ														3	3
6KS7G33	Thermal switch 85°C ±3				1	1			2	2	2	2				
6KS7G31	Thermal switch 70°C ±3						1									
6KS7G29	Thermal switch 80°C ±3							1					2			
6KS7G30	Thermal switch 90°C ±3														3	3
6KS8B28	Internal fuse - 1A/ 250V	X	1	1	1	1	1	1								
6KS8B29	Internal fuse - 2.5A/ 250V	X								1	1	1	1	1	1	1
6KS8B19	Internal fuse - 4A/500V	X								3	3	3	3	3	3	3
6KS7I69	Internal fuse - 3.15A/250V	X								1	1	1	1	1	1	1
6KS820B	Internal fuse - 16A/500V	X								3	3	3	3	3		
6KS821B	Internal fuse - 25A/500V	X													3	3



DV-300 Dimensions

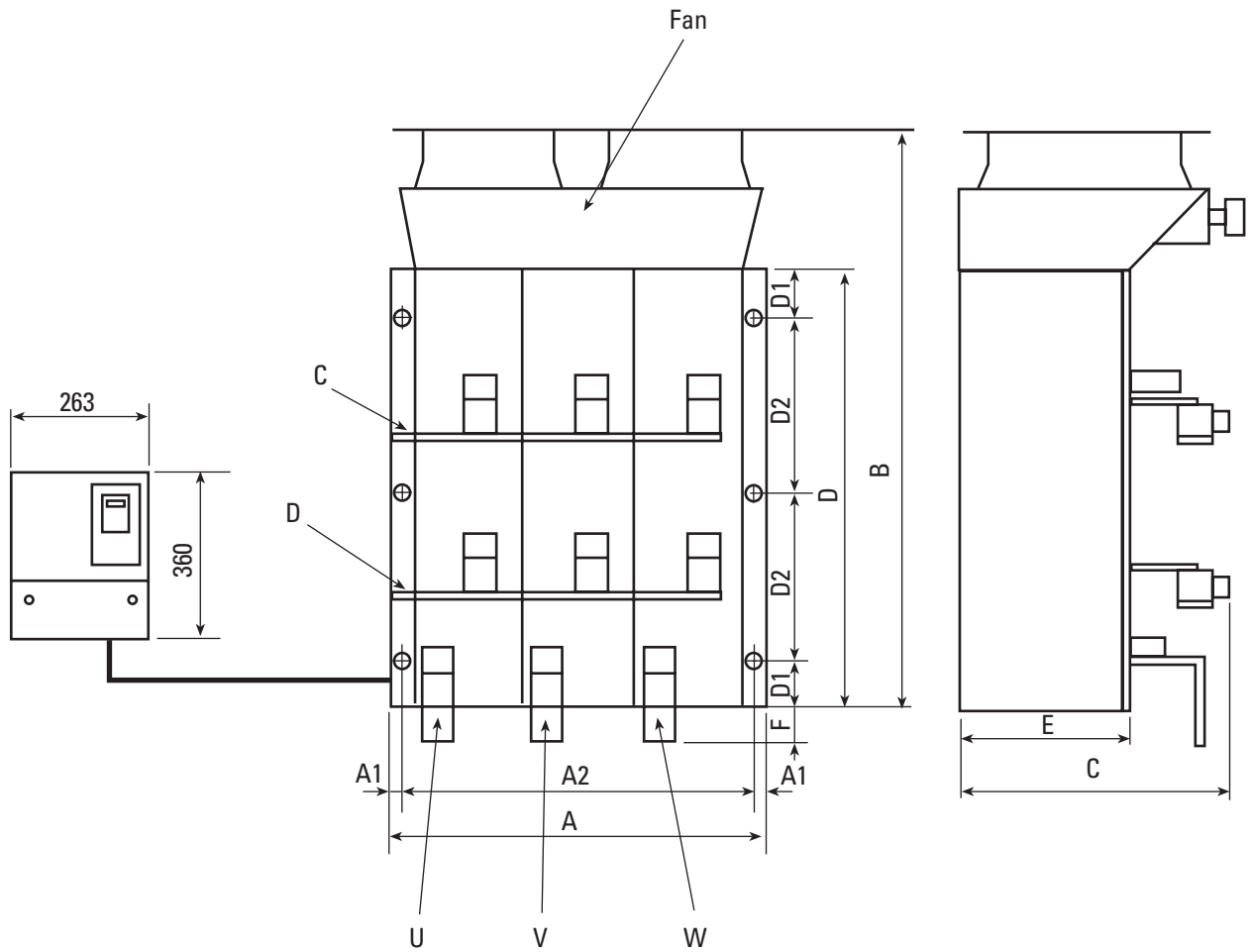


Mechanical dimensions of 17...850A Q2 AND Q4 Sizes

Model No.	Form	A	B	C	A1	B1	Lbs.
6KDV3017...	1	10.4	14.2	10.8	9.8	10.8	18.1
6KDV3035...		10.4	14.2	10.8	9.8	10.8	18.1
6KDV3056...		10.4	14.2	10.8	9.8	10.8	19
6KDV3088...		10.4	14.2	10.8	9.8	10.8	25.6
6KDV3112...		10.4	14.2	10.8	9.8	10.8	25.6
6KDV3148...		10.4	14.2	10.8	9.8	10.8	25.6
6KDV3224...	2	12.2	15.3	13.3	10.8	14.8	51.0
6KDV3280...		12.2	15.3	13.3	10.8	14.8	61.7
6KDV3336...		12.2	15.3	13.3	10.8	14.8	61.7
6KDV3400...		12.2	15.3	13.3	10.8	14.8	61.7
6KDV3450...		12.2	15.3	13.3	10.8	14.8	61.7
6KDV3560...	3	20.5	20.1	15.8	19.7	7.9	123.5
6KDV3800...		20.5	20.1	15.8	19.7	7.9	143.3
6KDV3850...		20.5	20.1	15.8	19.7	7.9	143.3

8-003

DV-300 DC DRIVE

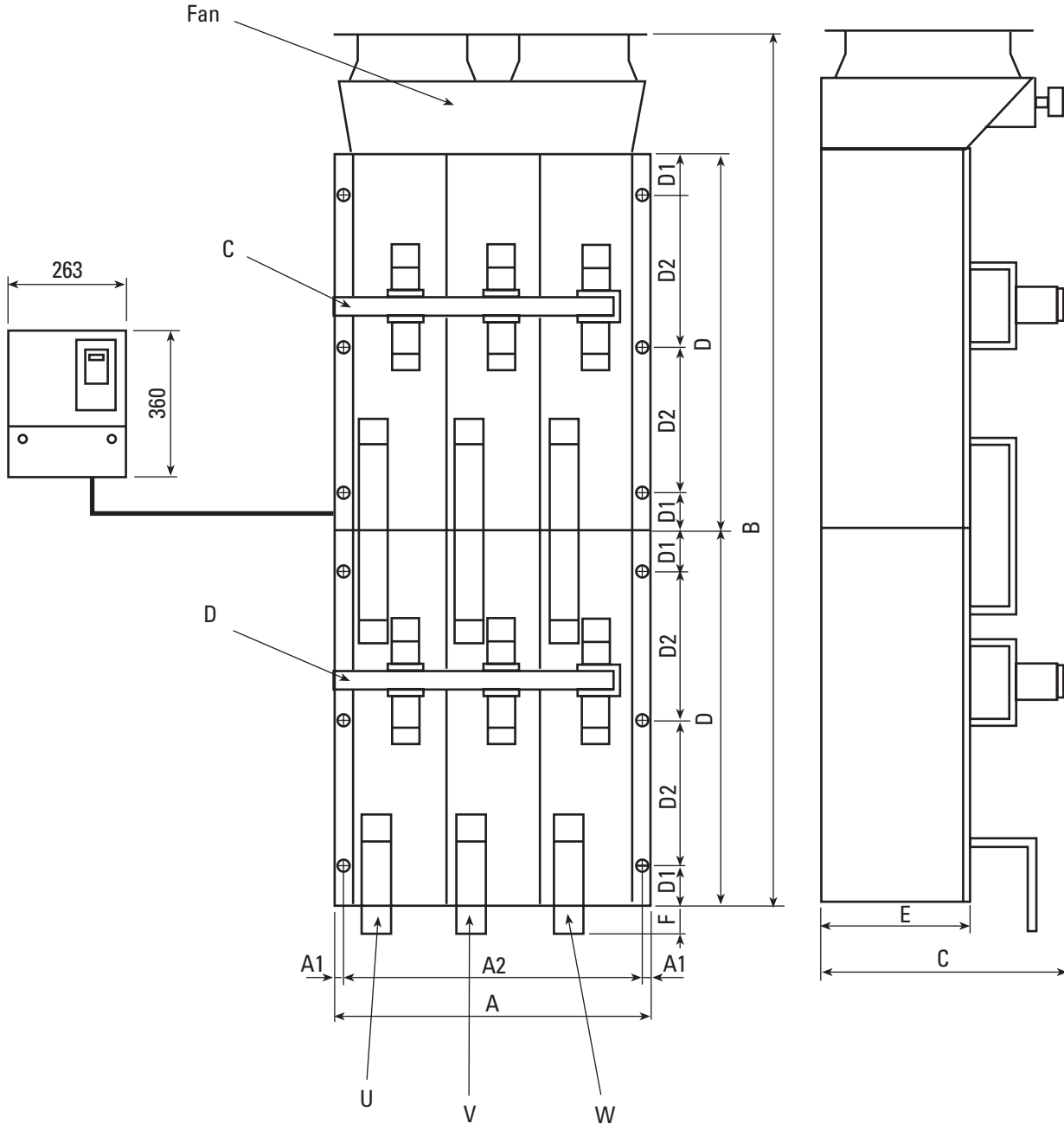


Mechanical dimensions of 900A...2350A Q2 Sizes

Model No.	A	B	C	D	E	F	A1	A2	D1	D2	lbs.
6KDV30900Q2C...	19.7	22.44	10.82	14.17	6.02	2.95	0.39	18.89	1.96	—	144
6KDV31000Q2B...	19.7	22.44	10.82	14.17	6.02	2.95	0.39	18.89	1.96	—	144
6KDV31150Q2C...	19.7	29.92	10.82	21.65	6.02	3.74	0.39	18.89	1.96	8.85	154
6KDV31300Q2B...	19.7	29.92	10.82	21.65	6.02	3.74	0.39	18.89	1.96	8.85	154
6KDV31350Q2C...	24.4	30.07	14.17	21.65	9.17	3.74	0.39	23.62	1.96	8.85	221
6KDV31400Q2B...	19.7	29.92	10.82	21.65	6.02	3.74	0.39	18.89	1.96	8.85	154
6KDV31500Q2B...	19.7	29.92	10.82	21.65	6.02	3.74	0.39	18.89	1.96	8.85	154
6KDV31500Q2C...	24.4	30.07	14.17	21.65	9.17	3.74	0.39	23.62	1.96	8.85	221
6KDV31800Q2B...	24.4	30.07	14.17	21.65	9.17	3.74	0.39	23.62	1.96	8.85	221
6KDV31800Q2C...	28.0	30.51	15.55	22.04	10.03	3.93	0.39	27.24	1.96	9.05	309
6KDV32000Q2B...	28.0	30.9	15.55	25.98	10.03	3.93	0.39	27.24	1.96	11.02	309
6KDV32000Q2C...	28.0	30.51	15.55	22.04	10.03	3.93	0.39	27.24	1.96	9.05	309
6KDV32200Q2B...	28.0	30.51	15.55	22.04	10.03	3.93	0.39	27.24	1.96	9.05	309
6KDV32350Q2B...	32.28	46.45	20.66	34.44	11.61	5.90	0.39	31.49	0.98	11.81	574
6KDV32350Q2C...	32.28	46.45	20.66	34.44	11.61	5.90	0.39	31.49	0.98	11.81	574

8-004

DV-300 Dimensions



Mechanical dimensions of 900A...2000A Q4 Sizes

Model No.	A	B	C	D	E	F	A1	A2	D1	D2	lbs.
6KDV30900Q4G...	19.7	29.92	10.82	21.65	6.02	2.95	0.39	18.89	1.96	8.85	154
6KDV31150Q4G...	19.7	51.57	14.76	21.65	6.02	3.74	0.39	18.89	1.96	8.85	287
6KDV31300Q4F...	19.7	51.57	14.76	21.65	6.02	3.74	0.39	18.89	1.96	8.85	287
6KDV31350Q4F...	19.7	51.57	14.76	21.65	6.02	3.74	0.39	18.89	1.96	8.85	287
6KDV31350Q4G...	24.4	51.73	18.70	21.65	9.17	3.74	0.39	23.62	1.96	8.85	375
6KDV31500Q4F...	19.7	51.57	14.76	21.65	6.02	3.74	0.39	18.89	1.96	8.85	287
6KDV31500Q4G...	24.4	51.73	18.70	21.65	9.17	3.74	0.39	23.62	1.96	8.85	375
6KDV31800Q4F...	24.4	51.73	18.70	21.65	9.17	3.74	0.39	23.62	1.96	8.85	375
6KDV31800Q4G...	28.0	52.55	18.70	22.04	10.03	3.74	0.39	27.24	1.96	9.05	530
6KDV32000Q4F...	28.0	52.55	18.70	22.04	10.03	3.74	0.39	27.24	1.96	9.05	530
6KDV32000Q4G...	28.0	52.55	18.70	22.04	10.03	3.74	0.39	27.24	1.96	9.05	530

8-005