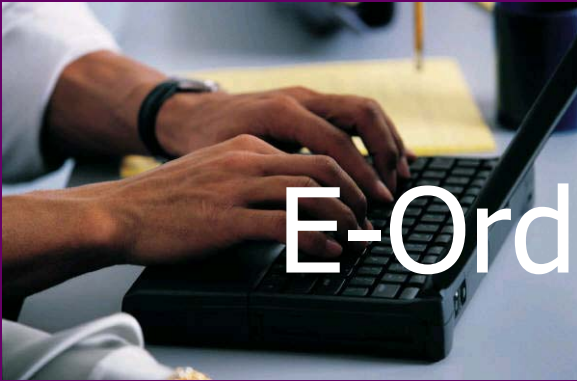




*GE Power Controls*



# E-Order Solutions



## Order By E-mail

A guide to the new E-Order tool from GE Power Controls

# Make your e-mail work for you...



and it can save you *time, money*, and increase your *productivity!*

Introducing Order By E-mail, the innovative electronic order solution from GE Power Controls. Instead of chasing faxes or spending hours on the phone placing orders, simply fill out an order template, and e-mail your order. Simple, quick, and hassle-free, available 24/7.

Your order details get entered directly into the GE Power Controls order system.

All you need is your own e-mail account. Any type of e-mail format is suitable\*.

There is no logging on to the Internet, no passwords to remember, and no extra investment required.

-----Message d'origine-----  
De : orders.internet@gepc.ge.com (mailto:orders.internet@gepc.ge.com)  
Envoyé : 27 September 2002 12:28  
À : Gery, Philippe (IntlSys, GEPC)  
Objet : GE Power Controls - Order Acknowledgment

PLEASE DO NOT REPLY TO THIS E-MAIL

Thank you for ordering online via EliteNet! This e-mail is your order acknowledgment for the below purchase request:

We received your order on September 27, 2002  
Your GE Order Number: 0000782236  
Your PO Number: 1 test with order  
Your Account Number: 0000121557  
VINCO (IN) SEA

Please log-in to your EliteNet web site at <http://www.gepowercontrols.com> to get up-to-date status on all your orders. This order will be available at your web site from tomorrow.

*As soon as you have sent your Order By E-mail, you will receive an order confirmation. GE Power Controls customer services will also receive a copy, should you wish to speak to anyone about your order.*

\*please note, the automatic order generation will only work with Microsoft Outlook – if you do not have this, you can still use Order By E-mail by attaching your order file to your e-mail. Please enquire for further details [E.Business@gepc.ge.com](mailto:E.Business@gepc.ge.com)

## Step By Step

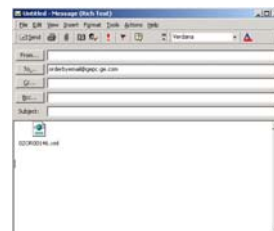
1. Fill in the Excel spreadsheet with the order details

GEPC Material Number	UOM	Quantity	Required Date
000034	EA	1	
000036	EA	1	
000039	EA	1	

2. Click on the orange tab

**Send Order by e-mail**

3. An e-mail with your order file attached is generated



4. Click 'Send'. Your order has been entered directly into the GE Power Controls system



# BENEFITS

## *of Order By E-mail*

Fastest order method available

*Order By E-mail is quicker than sending a fax*

No special log-on required

*Passwords and internet log-on are not necessary when using Order By E-mail*

Low cost order solution

*If you already use e-mail as part of your day-to-day business, there are no set-up costs or extra running costs*

What you order is what you get

*You are in control of what order data gets entered into the system – no third parties are involved*

## *Register for EliteNet*

Once you have placed your Order By E-mail, you can track the progress of your order through EliteNet, the online order management system from GE Power Controls.



In addition, you can also use EliteNet for checking price and availability on items and placing orders.



Registration is free, and you will gain access to a host of other benefits including solution advisors, regular updates, and your own order history dashboards.

## How to start ordering by e-mail

To bring the benefits of Order By E-mail to your company, simply e-mail your company name, and most importantly your GE Power Controls customer number. to:

[E.Business@gepc.ge.com](mailto:E.Business@gepc.ge.com)

with 'Order By E-mail Request' as the subject.

Alternatively, contact your local GE Power Controls Sales Engineer who can arrange an account for you.

# Further Information..

If you are a direct customer of GE Power Controls and you would like to take advantage of Order By E-mail, please contact the E-Business team at:

E.Business@gepc.ge.com



Alternatively, contact your local GE Power Controls Sales Engineer.

**NEW!!**

For a working demonstration of EliteNet, go to [www.gepowercontrols.com](http://www.gepowercontrols.com), and click on the EliteNet icon.





## **GE Power Controls**

---

*Edificio Avila-Llull  
Llull 95-97, 2a Planta  
08005 Barcelona  
SPAIN*

[www.gepowercontrols.com](http://www.gepowercontrols.com)  
[E.Business@gepc.ge.com](mailto:E.Business@gepc.ge.com)