



GE Power Controls



E-Order Solutions



Web-EDI

A guide to using Web-EDI from GE Power Controls

Web-EDI

from GE Power Controls

What is Web-EDI?


Web-EDI combines elements of traditional EDI (Electronic Data Interchange) and online ordering.

Using Web-EDI, you generate your order as an XML file. Then, via the secure EliteNet accessible through www.gepowercontrols.com, the order is uploaded straight into the GE Power Controls system.



the *SPEED*
and *EFFICIENCY*
of *EDI.....*

minus the *COST*

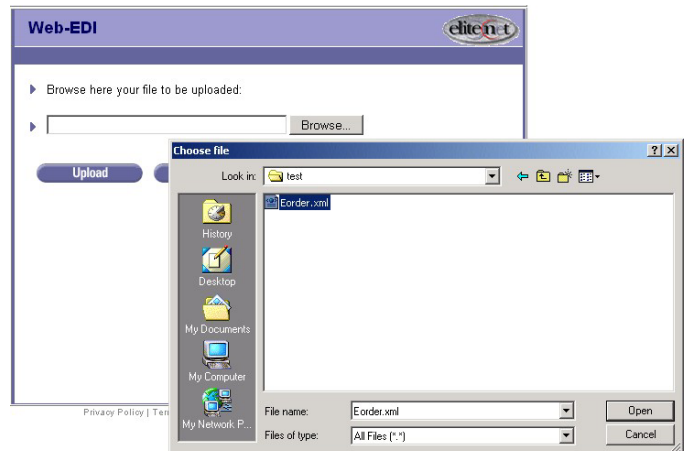
 **GE Power Controls**

Steps to send your order:
1- Fill the order template.
2- Click on **Create Order for Web-EDI**.
3- Go to **Elitenet** to upload your Order.

PO# :	02OR00146	Buyer :	101485
Requested date (dd/mm/yy) :	02/09/02	Delivery Place :	101485
Order Date (dd/mm/yy) :	22/08/02	Sales Organisation :	UK - GB01
Comment:		Your e-mail :	test@gepc.ge.com
		Currency :	GBP

Create Order for Web-EDI **Go to Elitenet** * : Required

GEPC Material Number *	UOM	Quantity *	Requested Date
666364		15	
831038		5	
600539		25	



BENEFITS

of Web-EDI

No Set-Up Costs

Unlike traditional EDI, there is no extra investment required; you just need a computer and internet connection

Increased Order Quality

No third-party intervention to your order ensures what you order, is what you get

Increased Productivity

Savings in time spent on orders increases productivity

Track Your Order

Complete Control.....



...from start to finish

Web-EDI is accessible through the EliteNet Order Manager Tool from GE Power Controls.

However, EliteNet can also be used for tracking your order progress.

Check whether your order has been shipped, or is on hold.

You can create new orders from scratch, check price and availability of items, and access your order history information.

Available to you, when you register for EliteNet from GE Power Controls.

Further Information..

If you are a direct customer of GE Power Controls and you would like to take advantage of Web-EDI, please contact the E-Business team at:

E.Business@gepc.ge.com



Alternatively, contact your local GE Power Controls Sales Engineer.

NEW!!

For a working demonstration of EliteNet, go to www.gepowercontrols.com, and click on the EliteNet icon.





GE Power Controls

*Edificio Avila-Llull
Llull 95-97, 2a Planta
08005 Barcelona
SPAIN*

www.gepowercontrols.com
E.Business@gepc.ge.com