

# GE Consumer & Industrial

## 1. Description of the project

<b>Country:</b>	Belgium
<b>Localisation:</b>	Antwerpen
<b>Customer:</b>	Alcatel
<b>Project:</b>	ASAM-C (Advanced Services Access Manager Outdoor Cabinet)
<b>Scope:</b>	Repowering Unit for the Alcatel xDSL Outdoor Street Cabinet.

## 2. Requirement of the customer

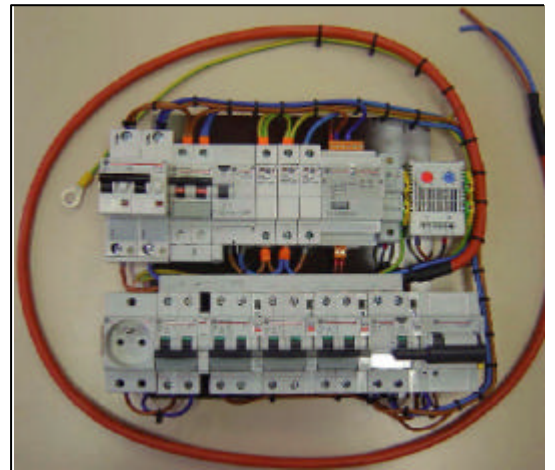
- Solution provider; co-engineering, testing and production of the power supply unit
- Meet high quality standards and technical specs, especially on EMC compatibility and heat dissipation
- Accessibility to test facilities and expertise in the qualification and certification process
- Worldwide presence with one point of contact

## 3. Why a GE solution

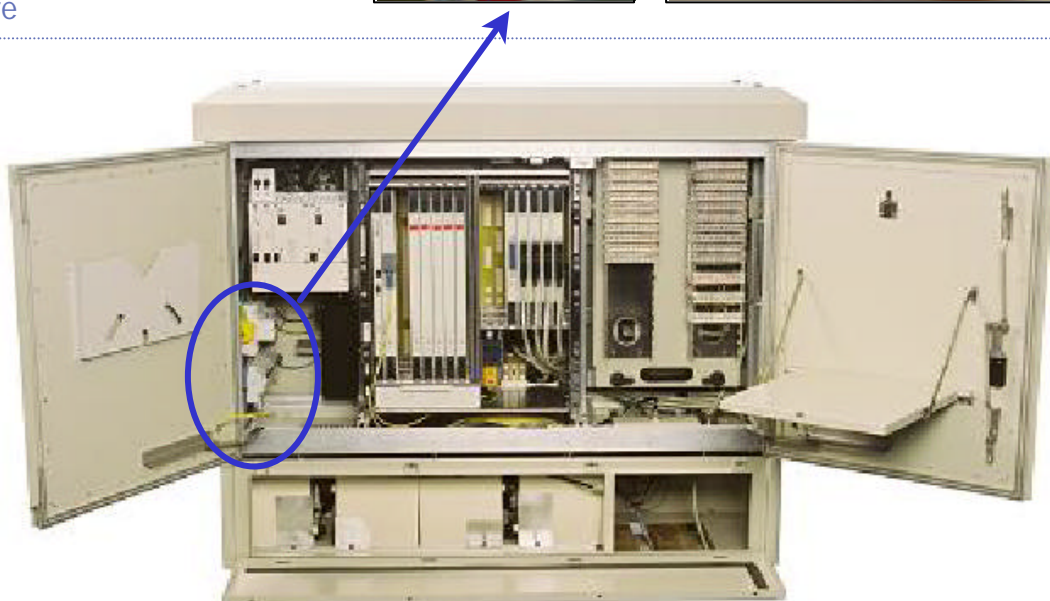
- Co-Engineering, design-in and expertise in providing technical solution
- Alcatel Audit demonstrated GE's Quality Processes, Products and Services
- Access to GE Testing & Certification Lab
- Worldwide presence with one point of contact

## 4. Key Technical Features

- Guaranteed functioning at ambient temperature from  $-45^{\circ}\text{C}$  up to  $65^{\circ}\text{C}$
- Automatic reconnection system after surge or ground fault
- MCB S90 guarantees high total selectivity
- Motor controlled 30mA RCCD
- Surge arrester 25KV
- Fault monitoring & signalisation



## 5. General Architecture



GE imagination at work



Contact name  
Philippe Dumortier  
T. +32 92652130