

1. Description of the project

Country: China
Localisation: Shanghai – Pudong
Customer: INGEROP – ALSTOM ENERGY SERVICES (CNIM)
Project: Waste to energy plant to distribute power to New city of Shanghai (45MW)
Capacity: 3 waste lines of 15 tons/hour (1000 tons a day)

2. Requirement of the customer

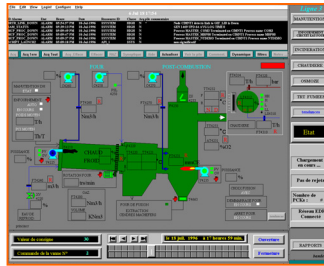
Customised existing process from France- project release with CLEMESSY
 Global solution with commissioning on site
 Software system (english, chinese)
 System full redundant (server, network, PLC)

3. Why a GE solution

Local presence of GE service team in Shanghai for daily contacts
 Innovative and open solutions
 Cost & expertise

4. Key Technical Features

- 3 Steam turbine 15MW each.
- 2 Cimplicity redundant server / 8 operator station
- Optical Fiber Network
- 7 Hot standby PLC 9070 CGR935
- Remote I/O on redundant network
- Automatic English/Chinese language interface



5. General Architecture-Process

