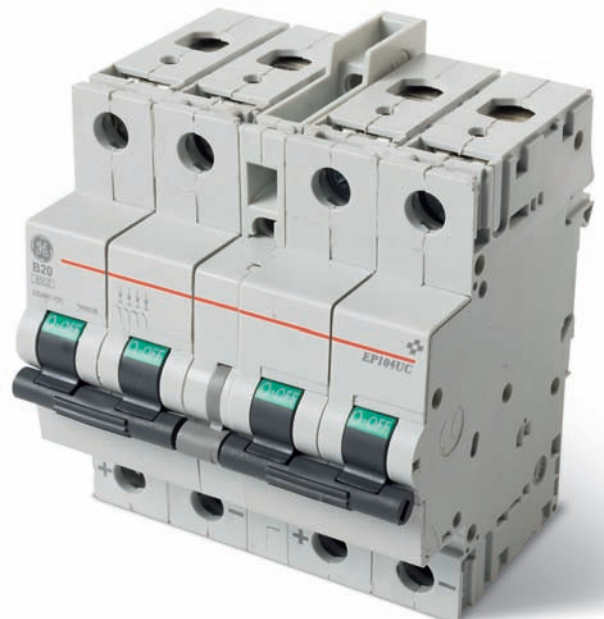


New MCB's for photovoltaic applications



First solution for growing market
of solar electric power

- Compact design
- High voltage 880V upto 63A
- Safetylock with padlocking bracket
- Add-on devices for remote signalisation and tripping
- Add-on motor driver Tele MP



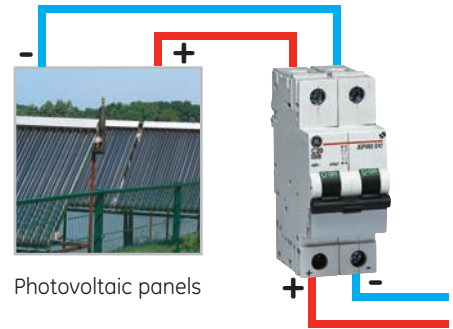
GE imagination at work

Miniature Circuit Breakers for photovoltaic applications
Application as loadbreak disconnecter

Series EP100UC

Curve	B
Thermal setting In	(A) 6 - 63
Rated voltage DC Un	(V) 440
Maximum operating voltage DC	(V) 250
Minimum operating voltage DC	(V) 12
As loadbreak disconnecter	yes
Rated insulation voltage Ui	
Pollution degree 2	(V) 500
Pollution degree 3	(V) 440
Rated impulse withstand voltage Uimp	(kV) 6
Dielectric rigidity	(kV) 2.5
Mechanical/electrical endurance	20000/1000 ops.

Connection diagram



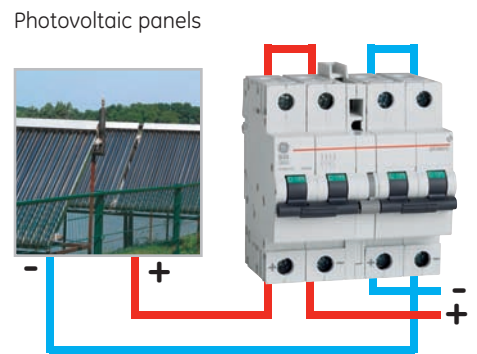
Series EP100UC

	In (A)	Cat. No.	Ref. No.	Pack.
2P 2 mod.	6	EP102 UC B06	673342	1/6
	10	EP102 UC B10	673343	1/6
	16	EP102 UC B16	673344	1/6
	20	EP102 UC B20	673345	1/6
	25	EP102 UC B25	673346	1/6
	32	EP102 UC B32	673347	1/6
	40	EP102 UC B40	673348	1/6
	50	EP102 UC B50	673349	1/6
	63	EP102 UC B63	673350	1/6

Series EP104UC

Curve	B
Thermal setting In	(A) 10 - 63
Rated voltage DC Un	(V) 880
Maximum operating voltage DC	(V) 1000
Minimum operating voltage DC	(V) 12
As loadbreak disconnecter	yes
Rated insulation voltage Ui	
Pollution degree 2	(V) 1200
Pollution degree 3	(V) 1000
Rated impulse withstand voltage Uimp	(kV) 6
Dielectric rigidity	(kV) 2.5
Mechanical/electrical endurance	20000/1000 ops.

Connection diagram



Series EP104UC

	In (A)	Cat. No.	Ref. No.	Pack.
4P 4 mod.	10	EP104 UC B10	690200	1/2
	16	EP104 UC B16	688029	1/2
	20	EP104 UC B20	688026	1/2
	25	EP104 UC B25	691580	1/2
	32	EP104 UC B32	691581	1/2
	40	EP104 UC B40	688027	1/2
	63	EP104 UC B63	688028	1/2



GE imagination at work

GE CONSUMER & INDUSTRIAL
 POWER PROTECTION
 Nieuwevaart 51
 B-9000 Gent - Belgium
 T +32/9 265 21 11
 F +32/9 265 28 90
 E gepcb@gepc.ge.com

GE POWER CONTROLS Ltd
 129-135 Camp Road
 St Albans
 Herts AL1 5HL
 United Kingdom
 Customer Service
 T 0800 587 1251
 F 0800 587 1239
 E gepcuk@gepc.ge.com